

## **CHAPTER IV**

### **MEANING AND NATURE OF CRIME**

#### **4.1 Introduction:**

Certain moral sentiments develop in the history of human society, how they developed is not our present concern certain of these moral sentiments become of such interest to the whole group that conduct out ranging then a made a crime. There is a relation between crime and immorality. In early societies these crimes arrows out of the feeling that conduct that offended the diety threatened the general security. Crime is a changing concept, dependent upon the social development of a people that is upon the fundamental interests and values dominating their common beliefs.

#### **4.2 Definition of crime:**

The concept of crime involves the idea of a public as opposed to a private wrong with the consequent intervention between the criminal and injured party by an agency representing the community as whole. Crime is thus the international commission of an act deemed socially harmful; or dangerous and the reason for making any given act a crime is the public injury that would result from its frequent participation. The society therefore takes steps for its prevention by prescribing specific punishments for each crime.

1. The word 'crime' is of origin viz; 'Crimean' which means 'charge' or 'offence' Crime is a social fact.
2. The Waverly Encyclopedia defines it as, "An act forbidden by law and for performing which the perpetrator is liable to punishment".
3. James Anthony Froude (1818-94) wrote, "Crime is not punished as offence against God, but as prejudicial to society".
4. Sir John Hare (1844 - 1921) Explains, "Crimes sometimes shock us too much: Vices always too little".
5. Dr. Gillian J.L. points out, "More important is the feeling of danger to ourselves and our property than the criminal-induces". (Gillian, J.L Criminology and penology (1945) p. 2.

6. Mr. Justin Millar contends that the crime is the commission or omission of act which the law forbids or commands under pain of punishment to be imposed by the State.
7. Watermark Says that customs and laws are based on moral ideas and that 'crimes' are such modes of behavior as are regarded by society as crimes.
8. According to Adler, 'Crime' is merely, "an instance of behavior prohibited by criminal law".
9. According to the Italian school of criminologists, crime is abnormal in so far as it is atavistic or pathological in its nature.
10. Halsbury defines crime as, "an unlawful act or default, which is an offence against the public and which renders the perpetrator of the act or default liable to legal punishment".
11. Sellin, T. regards crime as a deviation from or breach of, a conduct norm. This deviation or breach is punished by society by means of its sanction. But punishment is not only the criterion of value. Religion, art, education and other sociological agencies also reveal value (Sellin T. culture conflict and crime pp. 32-33.). According to this definition, crime is an act in violation of the law and the criminal is a person who does an act in violation of the law.
12. The concise Encyclopedia of crime and criminals, has defined 'crime' thus: "A crime is an act or default which prejudices the interests of the community and is forbidden by law under pain of punishment. It is an offence against the State, as contrasted with tort or a civil wrong, which is a violation of a right of an individual and which does not lead to punishment. (Edited by Sir Harold Scott, Pub. Andre Deutsch Ltd. 105, Great Russel Street, London, 1961, pp. 84 – 85.)
13. Crime in international context-"crime is complex, multidimensional event that occurs when the law, offender on target (refers to a person in personal crime and or object in property) converge in time and place (such as a street, corner, address, building or street segment)".
14. Crime in Indian context-"Crime is a activity that involves breaking the law and enforcements.

15. Meaning of crime in oxford dictionary-“an offence against an individual or the state which is punishable by law.
16. Crime-“An act committed or omitted in violation of law for bidding or commanding.”
17. Gwyenn Nettle: - Clearly remarks “Crime is work not added”. To fully appreciate the import of this remark it is necessary to recognize that the term crime is also part of the scheme of classification. It constitutes a category of events that contains within it numerous subcategories. At the same time the category of crime is itself a subcategory of a larger set of events.
18. Crime is phenomenon in human societies, according to Sociologist- Pris and Durkheim, “Criminality proceeds from the very nature of humanity itself, it is not transcendent but immanent.” Durkheim emphasized the point further when he says “Crime is normal in human societies because the fundamental condition of social organization logically imply it”. A society exempt from crime would require a standardization of the moral concepts of all individuals, which is neither possible nor desirable”.
19. Garofalo’s (1914 Pg No. 5) “natural” definition : crime is an immoral and harmful act that is regarded as criminal by public opinion because it is an “injury to so much of the moral sense as is represented by one or the other of the elementary altruistic sentiments of probity and pity. Moreover, the injury must wound these sentiments not in their superior and finer degrees, but in the average measure in which they are possessed by a community – a measure which is indispensable for the application of the individual to society”.
20. Crime: activities that involve breaking the law. (Oxford Dictionary).
21. Crime, the intentional commission of an act usually deemed socially harmfully of dangerous and specifically defined, prohibited, and punishable under the criminal law.
22. Conceptions of crime vary so widely from culture to culture and change with time to such an extent that it is extremely difficult to name any specific act universally regarded as criminal –(The New Encyclopedia Britannica Volume No. 5 -1985)

## **Crime**

- i) Law An act that subjects the doer to legal punishment; the commission or omission of an act specifically forbidden or enjoined by public law.
- ii) Any grave offense against morality or social order wickedness iniquity, see synonyms under ABOMINATION, offense. (The New International Webster's comprehensive Dictionary–Trident Press International 2003.)

We would give our own definition of crime. So as to bring all the essential features of what we call 'crime'. A crime may be defined as an act or omission, sinful or non-sinful, which a society or a state has of thought fit to punish or otherwise deal with under its laws for the time being in force. The different acts and or omissions so punishable under the law are known as "Crimes".

In this modern age, sociologists have expanded that crime happens in the social structure only. They don't agree that a human being happens to be a criminal by birth. They also analytically put forth many social factors which induce human beings towards criminality by going against the system of social control. Criminologists have proved these reasons leading to crime. Hence, while studying, the reasons for crime, the following factors should be considered.

There are two groups of factors leading to crime

- 1) Ordinary factors.
- 2) Specific factors.

### **4.3 Ordinary Factors:**

These factors affect the whole of the society. Further these ordinary factors are divided into four secondary factors. Those are 1) Geographical. 2) Sociological. 3) Physiological. 4) Atmospheric.

#### **4.3.1 Geographical Factors:**

In the evolution of society the geographical elements play an important role. This has been accepted by historians' torsions and sociologists. A supporter of the school of geographical thinker's tradition, Mr. Huntington states that a child born in winter usually becomes less intelligent. Some of such children become criminals. The geographical elements affect the emotions and behavior of an individual. Many of the

French, Italian and German criminologists have tried to show the relation between the features of geographical elements and the proportion of crimes. Mr. Lombroso has also prepared a calendar showing the occurrence of crimes in specific months of the year. According to him, child murders are proportionally more in the period from January to April. In July, murders and total attacks are found to increase. Human needs change according to the changes in seasons. e.g. in winter in the European countries, the primary (basic) needs increase and if there are obstacles in satisfying their needs, the individuals have a tendency to criminal acts.

“By geographical factors, we mean those factors which are connected with physical environment. The geographical setting governs the form of society. Due to geographical differences we find different types of culture and civilization in different geographical regions. The composition of population is closely connected with geographical conditions. Similarly diet, habits and social organization always develop in accordance to geographical conditions. Therefore whenever there is any change in the geographical setting there is also change in society.” K.Singh (1964).

#### **4.3.2 Sociological Factors:**

The number of crimes increases or decreases depending upon how far a society or a community is organized or divided. In a social group where migration, cultural differences, changes in the population and political instability prevail; there a conflict arises regarding the abatement of social rules.

#### **4.3.3 Physiological Factors:**

As a living being, man's physique, heredity and the functions of body glands are taken into consideration. In the opinion of Lombroso (a crime specialist) there is abnormality in the body and mind of a criminal right from his birth. Hence he becomes a criminal in his life. A man of oppressive and bad tempered mentality becomes a criminal. Broadly speaking, an individual inherits some of the organic properties from the parents. We call these as hereditary qualities. This inherited behavioral property is mainly responsible for the criminal attitude. Hereditary weakness and criminal attitude convert a man into a criminal. Mr. Dugdale, an American criminologist says that the life style of every human being is affected largely by the hereditary qualities. Hence, the consequent circumstances of hereditary qualities cause the future generations to be criminal minded continuously.

Some psychologists say that criminal behavior has its roots in the psychological set up of an individual. During the gradual psychological development of an individual some mental weaknesses take shape. These weaknesses become the causes of criminal behavior. Mental instability and criminality are closely related. Some psychiatrists have tried to correlate criminality with the abnormality in the nerves. Disappointment, conflict, feeling of criminality, mental shocks etc. are related with the human mental activities and they become responsible for the criminal behavior. Sociologists, Psychologists and Psychiatrists have deeply studied of human behavior. These stimuli are created from eternal circumstances.

#### **4.4 Circumstantial Elements:**

These are related with the criminality of human beings. The following circumstantial elements may be considered.

**a) Family Circumstances:**

The family is looked upon as a powerful cause of forming good or bad personality developments. The very important task of a family is to socialize an individual and to impart social rules and to develop the individual culturally, so that the individual becomes a responsible citizen. But, under certain circumstance this family responsibility fails and the members of the family tend to become criminals.

**b) A Ruined Family:**

If in a family, the father and the mother are divorced, or dead, or living separately then such a family is in the ruins. The children of a such a family turn towards criminality. This has been proved from various researches conducted so far.

**c) The Size of the Family:**

A big or a small family is respectively denoted by the number of members in the family. More members make a big family and fewer members make a small family. Usually in a big family there will be difficulties regarding food and management. In such large families, generally children are neglected and such neglected children tend to become criminals. In these matters there have not been researcher showing a definite relation of criminality with the size of the family. Still, in the urban areas, children in the big families generally turn to criminal behavior.

**d) Serial Placement among Brothers in a Family:**

Research has been conducted to show the probability of criminality of a brother by his servility among his brothers. Some criminologists of New York have conducted research in 1930 to give the aforesaid conclusions. Generally the brother in the 2<sup>nd</sup> place of servility tends to become a criminal. The last but one child does not generally have a criminal behavior. The youngest child may turn to criminal behavior as compare with the elder brothers.

**e) Discontentedness in the Family:**

If the inter-relation between parents and children are not complacent, or instead of love, binding, sympathy, loyalty, c-operation belief, dedication there are conflict, alienation, disbelief, selfishness, unreasonable behavior, rivalry in the family then the members of the family especially the children behave in a dissatisfactory manner. From this, the criminal attitude arises.

**f) Fallen Family:**

If the responsible person or persons of a family are involved in drinking, extra-marital relations, polygamy and criminality, the atmosphere in the family is not moralistic and such a family is known as a fallen family. In such a family, criminality of individuals or specially children is very probable. Such a family is unable to impart civilized life or behavior.

**g) Absence of Orderliness in the Family:**

The most important duty of the family guardians is to be attentive towards the socially acceptable behavior of individuals and children in the family. They don't find time as they are involved in their own duties. Further, they don't have desire or they are ignorant and they have undue or over belief in their children. Whatever be the case, if the guardians don't care for the proper behavior of the children, then they will certainly turn towards criminal behavior.

**h) There is a proverb that "A man is recognized by the company he keeps".** This companionship and crime may be inter-related and that can be studied as under:

1. Two or more people in company commit crime
2. Innocent people may probably fall into the company of criminals.

3. During the period of imprisonment, a criminal comes in contact with senior criminals from whom the tricks to commit criminal acts are learnt.

In the beginning stage of criminal behavior, the criminal company lays the foundation of criminal behavior. As a result, an individual develops criminal behavior as his profession. Seeking for the techniques of crime and growth of mental attitude are the fruits of bad company.

i) **Living in disorganized company**, in congestion and having immoral behavior in a heterogeneous community develop due to cinema. Disorganization breeds crime. Further, in the fast growing cities the increasing population is taken to be one of the prime factors in criminal activities.

j) **Disorganized living** under congested conditions, having immoral behavior with the movies to affect the behavior, the causes arise to result in criminal acts. That is to say, that the disorganized communities breed crime. Secondly, the increasing population in the urban areas is supposed to cause criminal behavior. Crimes occur more in thickly populated areas than in thinner populations of cities. Parents can't control the children who have to wander on roads. Such children take to criminal acts. Even, homes of too much congestion are sending to be the causes of crime. In the congested homes it is hard to keep up morality and orderly behavior. Those children, who spend their time on roads in playing, become victims of neglect by the elders and such children turn to criminal behavior. Such pockets of immoral behavior in communities are said to be responsible for the criminal act. The best examples are houses of cheaper and lower level entertainment and centers of betting games. These convert under age children into immoral acts. The established criminals frequently visit such centers of immoral behavior and here only the companions are naturally selected or here only the criminal professions are started. The society doesn't accept these centers which breed immorality in the individuals.

**k) The Movies:**

The cinema houses have become the centers of breeding criminal behavior in children of smaller age. The movies instigate sexual behavior, and getting the advantage of darkness in the theater/theatre the ignorant children are drawn towards sexual acts. Many children commit theft to visit the cinema.



**l) Financial Conditions:**

Monitory conditions are taken to be crime breeding reasons in three ways. 1) Difference in social status due to monitory conditions cause criminal acts and the extent of such effect can be studied. Besides, the effects of various professions on criminal behavior can also be studied. Mr. Bonger, a Dutch criminologist says that the atmospheric elements are more responsible for criminal activity. He further says that the criminal activity is abundant in a disorganized society. In societies in which the important regulations are broken, the criminal activity forms a firm background. However in many disorganized societies, individuals are found to stay free from criminal activities. And in well organized societies, some individuals may turn to criminal behavior. It is but obvious that the criminality is more probable in the disorganized societies, than the organized societies.

**m) Regional Variance:**

The proportionate frequency of criminality and the types of crime change depending upon the region or division of place. The main causal factor of criminal behavior is the structural variety in community. e.g. the judicial and social definitions are different from state to state. The view point of the public towards crime or criminal behavior is different. There are different laws in different areas and they are implemented to control the behavior going against lawful life of a community. The traditional life of communities too tries to curb the criminal behavior. The queer minded persons are of various types depending upon the territorial difference. Even the types of crime are different in different communities of different areas. To illustrate, the border areas of a country may be considered. If groups of advanced class of people have entered the border area, the tendency to breach of law is upper most. The only reason is that there is no established administration of social or political community. Along the political border area there are frequent smuggling crimes. Normally the defense forces on both sides of the border are insufficient and this factor helps criminal's activities. Always there will be people who take advantage of insufficient military forces on the border and they conduct criminal activities.

In cities we find more crimes and child criminals also occur abundantly. Because of the unstable management of communities, the expected moralistic behavior is not extant everywhere. In the deep inner parts of a corporation however

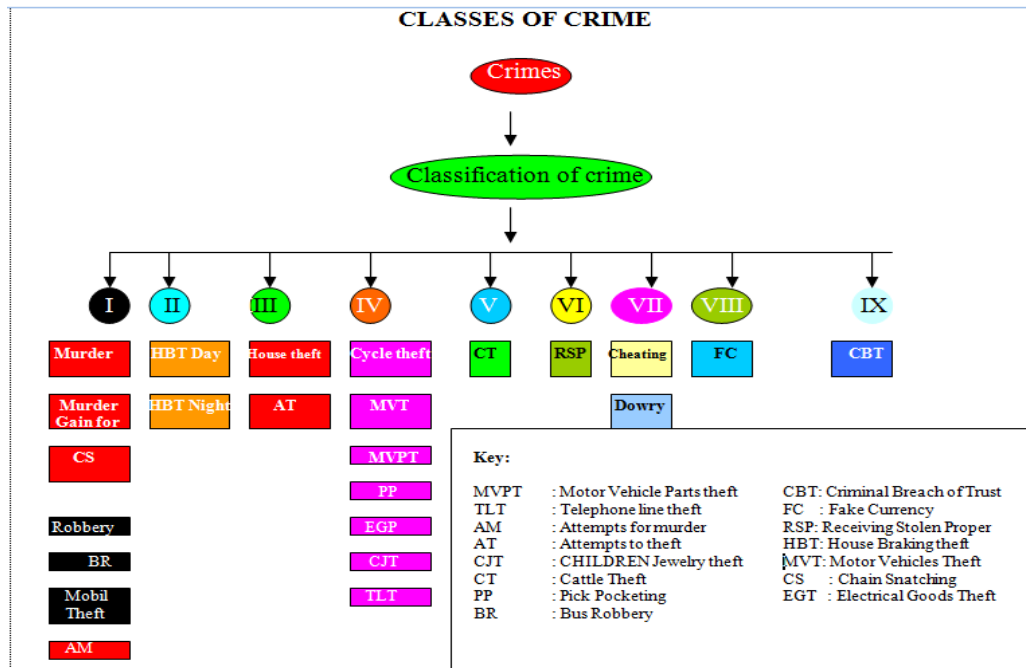
the proportion of crime per head decreases. Hence, regional difference shows variant proportion of crime. It is interesting to note that in areas where there is abundance of finance, facilities and conveniences, we find more criminal behavior. Where as in areas affected by natural calamities, scarcity and epidemics, we do find crime but in lesser proportion.

Class, age, sex, race etc. affect the criminal behavior. For example, the difference of status in a community initiates criminal behavior, and such people come under legal procedures. As these people grow in age, their attitude towards criminality recedes. The criminal attitude is found more in men than in women. Again the reason is that different communities have different views towards women. Generally, the disciplinary control over women is stricter. Further, women have limitations by nature over there physical conditions. They need protection; they are generally called as the weaker sex. Racial or national influence is found on criminality. Especially, in a heterogeneous society these qualities become. In a Nation, the outsiders are given the status of minority and they are looked upon differently regarding criminality.

These minority people have different problems to face. Thus, class, age, sex and race have their own impact over criminality and they are important in view of study.

#### **4.4 Types of Crimes/Classification of Crimes:**

All crimes are not similar. There are many types of different crimes (Fig. 4.1). In some crimes, only one individual is involved and in some other crimes there are many persons who are organized for the purpose of crime. There are such bands of criminals working at the national level and even there are bands of criminals whose field of crime is international. It is not only the males to be criminals but there are females and children also in criminal acts. So, in order to classify crime we have to consider the personality of the criminal, his purpose and the type of his crime. Mr. Sutherland, a criminologist, considers the seriousness of crimes and divides broadly into two types of crimes.



**Figure 4.1 Classes of crime**

1) Ordinary types of crime, 2) serious types of crime Mr. Bojore, another expert, classifies crimes into four main types depending upon their purpose or objective.

- 1) Monetary crimes: Crimes done to get money. E.g. Theft, decoity, fraud, forgery, contraband currency, etc.
- 2) Sexual crimes: Rapes, homosexualities.
- 3) Political crimes: Espionage (international), treachery, treason etc.
- 4) Miscellaneous crimes: Crimes other than the above three types e.g. quarrels, fights, kidnapping or addiction to narcotics etc.

Also the crimes are classified on the base of their antisocial or anti personal aspects as under:

**1) Murderous crimes:**

It is the prime need of an individual or community to be safe. Any behavior bringing this safety into danger may be called as murderous crime e.g. thrashing, enforcing starvation, causing physical, injuries, inducing some to suicide, victimizing, attempting to murder.

**2)(a) Crimes against moveable or immoveable possessions:**

Whether an individual or a community, the property or possessions are important. The basic human needs are food, shelter and clothing on which human welfare, establishment and safety depend. Naturally every community approves the legal ownership of possessions by individuals. Hence, theft, looting, fraud, forgery are crimes regarding possessions. Every human being has the right to protect the possessions. So, getting back the possessions from the criminals and punishing them were considered as personal issues. This tradition is even now found to exist among savage natives. But, this system is not practicable for all the persons and hence not effective always. On the other hand, vengeance and conflict arise and the peace and administration of the community are endangered. Therefore, crime against possessions is considered as logically coming under criminality.

Individual or social welfare depends upon the peaceful running of family. Therefore, any behavior bringing the family in danger is positively considered as crime e.g. Negligence of the parents regarding the care taking of their wards, breaking the traditional social concepts of marriages, having many husbands or many wives, extramarital relations, neglecting the helpless old.

**Crimes against moral values:**

The every organization of each community is based on certain morals and breach of this moral faith by misbehavior is considered as crime. In various communities there are family relations, marital relations are governed by certain moral rules. Going against these rules is condemned. Publicly displaying the nudity and showing openly the love or body, attractions are definitely moral crimes. Lying, tempting for extramarital relation, Deceit, inducing for drug addiction or betting etc are also moral crimes.

**Crimes against public peace and order:-**

For the welfare and peaceful life, safety of the people in community is essential. Almost all the communities are alert in keeping their constituent institutes active and therefore they are attentive regarding safety and order within the community. Any behavior against there is considered as crime. Any political party's government basically considers safety and order in the community and any anti-communistic behavior is treated as political crime.

### **Crimes against Public Health:**

These crimes include the activities of interference or hindrance in 1) irradiation of the epidemics, 2) vaccination of immunizing virus, 3) selling of adulterated food, 4) selling of unauthorized medicines.

### **Crimes regarding Natural Resources:-**

Just as the personal belongings and property are valuable, the natural resources are also very valuable to the community. The resources like, rivers, oceans, forests, mines, birds, cattle and other beasts and also human population are considered as the national property. Any behavior engaged in destroying the above items is considered as crime against national resources.

Considering the criminals in their social status, Mr. Sutherland gives two kinds of criminals.

1. Criminals of low status:
2. White collared criminals.

Individuals of low status in society may involve themselves in criminal activities. The reasons are obvious. Financial scarcity, the favourable crime provoking surroundings, ignorance, illiteracy, uncultured life etc. induce criminality.

White collared people have better financial conditions. They are well-bred and well-educated having good company. Such persons take the disadvantage of their position and commit crimes. Such people are called as white collared criminals. During their professional life these respectable and high class people do commit crimes. Unnecessary, but the increasing unnatural needs and greediness make these people to mismanage the powers vested in them and thus they become white collared criminals. Officers, clerks, professors, teachers, judges, doctors, M.P.S., M.L.A's, ministers, public workers, police, advocates etc are relatively enjoying social status and are respectable. Their duties carry responsibility. In order to carry out their duties they are vested with some authority. But many such people misuse their authoritative powers for their selfish motives. Consequently, the work carried out by such people is not properly done. That means, they commit the crime of not carrying out properly their duties. Further more, they convert illegal acts into legal acts. So such people commit double crime at a time. E.g. Loans to be sanctioned to the needy are not sanctioned.

There might be a person applying for loan for his selfish purposes, and to get the loan sanctioned, he may bribe the loan sanctioning officer. Such examples are experienced more and more in the present days. The persons involved in such crimes are highly educated and managing higher positions. Therefore, they are looked upon with faith because these persons are generally well versed with the legal aspects. They know the loopholes and they have an established relation with higher authorities and politicians. Hence the crimes do not come up or they are suppressed and the involved persons are ready to escape from the crime accusation. Such criminals of the white collared class get a lot of easy money which is in turn utilized for more luxury like drinking, betting, buying costly furniture and gold ornaments and spending their time in super hotels. These persons involve their money in anonymous investments to get more money. And this surplus money is used again to capture higher positions by bribing. The main aim is to earn more money by corruption. The persons concerned in higher promotions are kept pleased by bribing. The white collared people convert illegal operations into legal affairs by bribing and committing fraud. In addition, such criminal minded people support and help smuggling, corruption, misusing the authority, distributing false licenses or certificates and avoiding income tax or any legal tax. In this way the white collared criminals amass enormous amount of money which is utilized for their luxurious living. Such person doesn't have the social conscience, and there is no effective law to stop these persons, who always keep abusing the powers made available to them. These may be taken as the main reasons of white collared crimes.

#### **4.5 List of Criminality Types in India:**

The following list explains the different criminal behavior patterns

##### **4.5.1) Hooliganism:**

Under Indian Penal Code, Rule No. 146, the hooliganism is mentioned. It is considered as a crime of the disturbance of public peace, when an illegal or unlawful mob is formed and force is used, then the hooliganism crime is committed. Generally, the common objective of the mob is attained either individually or jointly by using force. In such an incident, every person in the mob is considered as a criminal.

#### **4.5.2) Kidnapping:**

This crime includes the corporal torturing of human beings. There are two types of kidnapping.

1) **Kidnapping of minors:**

When any person kidnaps a boy under 16 years and a girl under 18 years of age without the consent of parents or a person who induces elopement by some temptation, then this crime is said to be committed.

2) **Kidnapping by using force:**

When a person kidnaps another person by using force, by compelling, by deceit or by tempting then this crime is said to be committed.

#### **4.5.3) Murdering:**

Killing somebody intentionally comes under the crime of murdering. If the person committing the act knows that it is so imminently dangerous that it must, in all probability cause death or such bodily injury as is likely to cause death, and commits such act without any excuse for incurring the risk of causing death or such injury as aforesaid.

#### **4.5.4) Deception:**

When a person causes another person to part with or hand over anything or article to a third person, or if a person induces by compulsion another person to consent for the possession of a thing or article by a third person, then the act of deception occurs.

#### **4.5.5) Imitation:**

Contriving to imitate and prepare a similar from an original thing or copying out the original the crime of imitation takes place. Using false currency, coins or forged documents come under this crime. The main intention is to deceive.

#### **4.5.6) Theft by house breaking:**

If there is illegal trespassing in a house for the purpose of theft, this crime occurs.

#### **4.5.7) Theft:**

If some article or possession of a person is stolen without the knowledge or permission of the owner, then this crime is committed.

#### **4.5.8) Looting with the employment of force or beating:**

When there is an effort to steal and if during the actual operation of theft a person is injured in the fight or expires, or if a person is intimidated illegally of death or refection and if then the theft is done, this act comes under looting. Thus, looting is stealing or using violence.

#### **4.5.9) Decoity:**

When five or more men come together and try to steal or to loot, this activity comes under decoity.

#### **4.5.10) Dowry death:**

Where the death of a women is caused by any burns or bodily injury or occurs otherwise than under normal circumstances within seven years of her mairrage and it is shown that soon before her death she was subjected to currently or harrashment by her husband or any relative of her husband for , or in connection with, any demand of dowry, such death shall be called “dowry death”.

#### **4.5.11.) Rape:**

Man is said to commit “Rape” who except in the case hereinafter excepted has sexual intercourse with a women under circumstances.

#### **4.5.12) Hurt:**

Whoever causes bodily pain, disease or infermilty to any person is said to cause hurt.

### **4.6 Causes of Crime:**

The common factors in causing crimes are physical ailments which may be organic and functional. Mental ailments coupled with an environment which is favourable may cause an outburst of anti-social crime.

We know that conduct is an expression of mental activity. A delinquent act may be the result of neurosis or psychosis. It may be also due to the susceptibility to crime as



a consequence of a mental defect coupled with some environmental factors. Perhaps, the mind may be in some condition, but the crime is committed due to an emotional disability of childhood, or it may happen because of the impact of psychopathic.

If the delinquency is to be diagnosed, the crime person mental traits, peculiarities and disabilities play a very important part. It is quite plain that it is the mind that control criminal behavior. If the mind itself is deranged, defective or feeble we have no other go but to turn for cure or removal of the mental defect or fortification of the mental faculty.

#### **4.7 Correlation of crime with various agencies:**

##### **4.7.1. The cinema and the prevention of crime:**

The easily susceptible weak minds are criminally aroused by seeing the criminal scenes which easily impress the weak minds. Sex appeals, adventurous inclinations may be stimulated or created. The viewer may be inspired to initiate what he or she saw on the screen. The remedy however lies in efficient censorship of films and their shows. The parents are also equally responsible in keeping vigilance over such shows and keep away their wards. The sexy erotic dance programmes and criminal pictures should be carefully and tactfully avoided.

##### **4.7.2. Child employment and crime:**

The employment of children is looked upon as a cheaper labor, but it deprives the child from the ever necessary socializing influence and the loving company of their own family group and the schooling. Such child employment robs the child of its healthy growth in an environment congenial to its formation. The child may have to spend his childhood in contact with mal adjustment and dissatisfaction which is drudgery for him. The child is denied his rights to healthy growth and education. By curbing the child's physical growth and maintenance of good health and making him to work monotonously without proper education definitely make the child desire less for progress and he becomes a misfit in life.

##### **4.7.3. Poverty, a cause of crime:**

None can deny that for want of money and crime may be committed. Economic depressions along with poverty have tremendous influence in causation and

commission of crime. The crime may be committed to achieve dishonest possession. In the process of acquisition, crime is the least thought off. If there is scope to make compensation to the aggrieved party while dealing with offender, the cases of dishonest acquisition may decrease to a great extent.

However, economic depression is lead to criminality every where and the percentage is more if the persons involved are of infirm character or weak will power. Of course, poverty it self is not necessarily a crime causing factor but there are other factors that commute to criminality. Hundreds of poor persons are there in many lauds and they are not at all crime minded; on the other hand there can be hundreds of wealthy persons who are acutely avaricious and therefore do not hesitate in indulging with criminal dealings where money is concerned. Among the educated white-collared people, there are offenders who have high positions and status in society and the multiple factor theory can apply to determine the true factors in the causation of crimes.

As a side issue of unemployment, poverty plays a major role. Both unemployment and poverty are major social problems which cause sickness, either individually or communally and therefore there can be family and community disorganization. The poor have such a low income that it is very difficult foot them to manage hand to mouth. Further they have responsibilities of education, clothing, medical care and much more responsibilities. Due to the negative way of life, they are discouraged and may take recourse to improper functioning leading to delinquency and criminal behavior. In the undeveloped, backward countries where people are suffering from hunger and other wants have no other go than to tread criminal attitude of life. However, we can not say that all the, percent population is criminal, though poverty prevails in majority.

The depression in the economy of society gives rise to criminal acts and we find that unemployment also is a factor in the criminality of the people. In a capitalistic organization there can be crimes of property management and purchase. What we need to know is the correct interpretation of criminal factors. Do men steal because they are hungry? Similarly, do girls enter prostitution because they need? It is true that some men steal because they ot their families are in need. Similarly, some girls take recourse to prostitution because of utter necessity. Unemployment and consequently distress doubtlessly put an individual under strain which is impossible

for them to bear. Of course some people are there who in their deepest distress do not .commit crime and virtuous girls do not fall a prey to prostitution though they are under heavy strain. So in most cases, economic factor affect indirectly rather than directly. Need becomes a circumstances under which certain people respond by antisocial conduct and act.

#### **4.7.4 Social Factors:**

Conduct in life of a person is practically determined by the society in which he lives. Therefore, social conditions affect. The conduct of a person, just as the economic conditions affect it is evident that personality develops in the social environment. If these environments are of such a nature as to bring out the person inherent qualities which are already adapted to the present social life. A person begins to inhibit the present social characteristics by his antisocial conduct when we are under the impression that the person is behaving as per norms of the society. Thus we face two faced questions:

#### **4.7.5 Pro Social Conduct**

Anti-social conduct and we must know that such changes are due to the stimulation of circumstance in the society in which the person lives.

The social factors which surround an individual can be classified broadly as under:

The home

The recreational agencies

The school

The community

Traditions, customs and beliefs

#### **4.7.6 Class And Religion**

Frequently, social conditions within these areas are inimical to the development of a socially desirable personality's conduct. The mutual relations between parents and their children are extremely significant. Very strict or too lenient treatment parental discord in handling the children or favoritism over one or the other of the children have been closely observed by scholars to find they play a very important part in

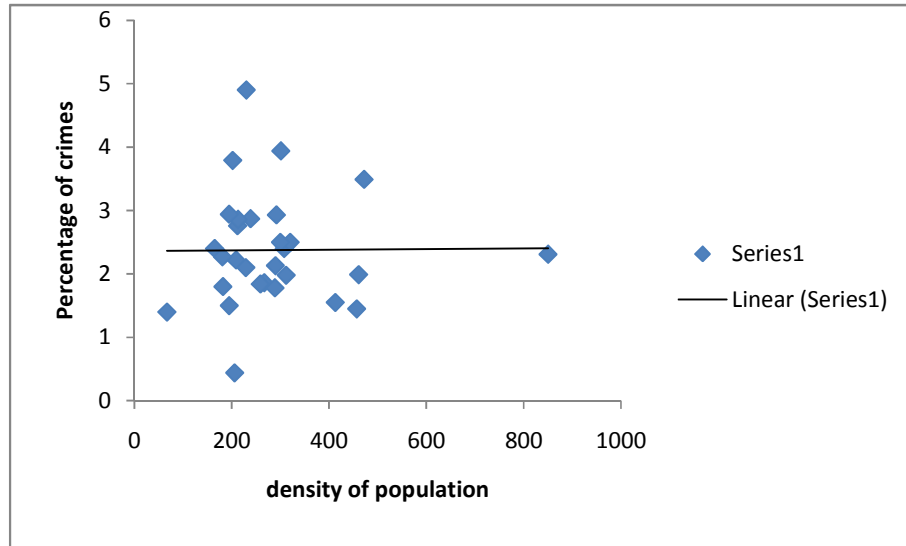
creating a criminal of a child. It is in the home that most of the behavior patterns are effectively set and therefore, better or worse children learn the values and attitudes which find expression in meeting the tests of later life by which they may be branded as virtuous or criminal.

#### **4.7.7 Population and Crime:**

The population of the world is becoming double every thirty five years, adding 70 million people every year. As a corollary cities are getting over crowded and ugly. Naturally this causes breeding of crime and disease. Unrestricted increase of industrial population is leading the breakdown the barriers of society. Hence the population explosion is a dilemma. We can compare the crime rate along with the growing population. Overcrowding definitely causes social, moral and mental problems. Modern scientific investigations have revealed how even rats and cats degenerate in a crowded living condition. Thus, the population increase and urbanization have together caused serious problems in establishing healthy urban units and there is now a challenge to healthy human existence because of prostitution, hurting rioting, thefts looting decoity etc.

#### **4.7.8 Population Density and Crimes in Maharashtra**

To study the co-relation between population and percentage of crime used the Pearson's co-relation method. Calculating the co-relation between the population and crimes r value comes  $r = 0.83$  it indicates significant positive co-relation and co-efficient  $r^2=0.65$ . It reveals that highest population indicates highest crime rate e.f. in Mumbai, Thane, Nagpur, Pune, Nasik, Aurangabad population density is high in proportion to this crime rate are also high. See the fig 4.2



**Figure 4.2 .Regression Density of population and % of crime 20101**

#### **4.7.9 Urbanization:**

The process of urbanization is very rapid without its awareness. There is growing concentration in large cities and naturally there are problems of size and diminutions of the urban area. The significant features of urbanization are also under affectation. Society is composite of family, caste, religion, economy, education and political ups and downs. Therefore the modern cities are confronted with problems of over crowding and crime. In the urban areas, pick-pocketing, rape, cheating, roils, hurting, murders, white-collar crimes are accumulating. Slums are the evil are as of cities because crimes are always bred and hatched in them.

Crime and sex problems are the standing challenges as a menace to civilization. Unhappy marriages, increasing divorces juvenile delinquency and allied evils are caused from the disintegration of urbanity. Prostitution has always been a product of urban culture where people thick that ‘white slaves’ are voluntary prostitutes and corrupts. Sex freedom is the fashion of the day. Further, sex freedom and abortion go hand-in-hand. Now socially the shame of abortion is gone and the number of virgin or unwed mother is growing very fast. In cities, in our race for pleasures we fall prey to the temptations of acquisition and luxury and suffer from lack of human values and objectives of life.

#### **4.7.10 Poverty and Unemployment:**

Poverty and unemployment are two major evils of society causing serious situations in personal, family and community disorganization. However there are not new in the community. They are there since the down of civilization. One method or the other was devised to help those suffering from poverty, dependence and unemployed. So long as such needs of the society were possible to be controlled by easier means. But since the technological advancement, industrial revolution and new concepts of democracy, the problem unemployment has assumed new dimension. Poverty and richness are relative terms, because poverty in a society is determined by the mode of living and customs. That is, poverty is relative to the scale of living in a given group or country. One way of measuring poverty or richness in a country is the level of easily availability of goods and services necessary for consumption in a particular year. If there are handles or in capabilities due to incapacity of the individuals, adverse physical environments hindering economic factors defects in social organization then they are attributed to poverty.

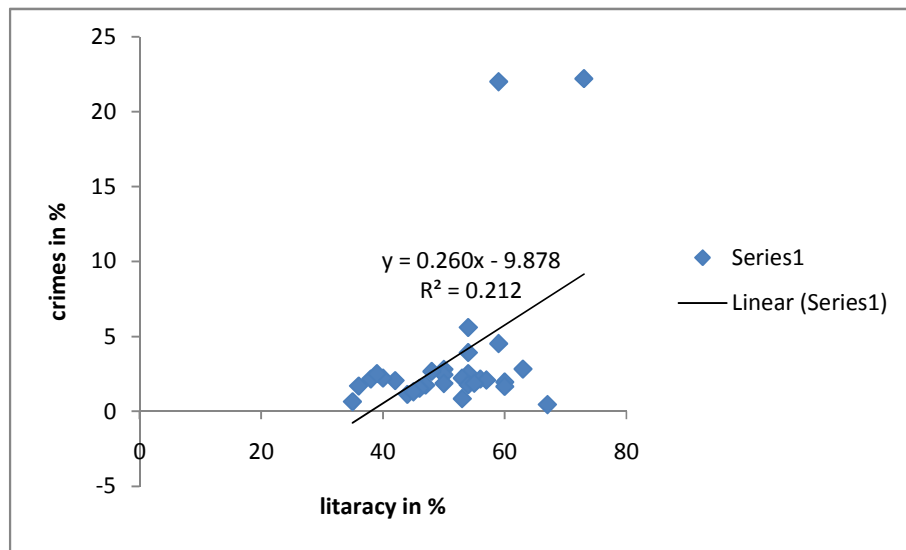
#### **4.7.11 Unemployment:**

This factor is found every where in all the countries. If the countries are industrially advanced, then the unemployment is of industry nature and the causes are relative to industrial training and specialization. However, the nature of unemployment differs from country to country depending upon the fields of industries the countries have. There can be seasonal unemployment, temporary unemployment, voluntary unemployment, cyclic unemployment, unemployment due to want funds, equipment etc. There can be involuntary unemployment also.

#### **4.7.12 Literacy:**

Literacy is to train individual for social life. It is safing character and formation of good habits. Literacy is one of the important indicators of social development. Literacy is human right a tool, empowerment and means for social and human development. Literacy always plays an important role to develop any society. Social morality and human values are depend upon literacy. In 1991, 64.87 per cent of literacy and in 2001 it increased 76.62 per cent.

In this present study reveals the correlation between literacy and number of crimes per 1 lakh population. Fig no-4.3 shows that correlation between literacy and number of crimes per one lakh population for calculating co efficient between these two variables used the pearson's correlation method and used the district wise literacy data and number of crimes per lacckh population. The value comes to  $r = 0.549$  and its coefficient of determination  $r^2$  comes to 0.212. It shows that the positive correlation. In urban areas literacy rate in high as well as crime rate also high. Simple regression method is used for detrmining the existance of a linear or strength line relation between these variables sees fig no-4.3



**Figure 4.3 Literacy and crime 1991**

**Table 4.1:****Maharashtra Literacy rate (1991- 2001) and districtwise population.**

Sr.No	District	Literacy rate	Literacy rate	IPC rate	Crime	Density of Population	
		1991	2001	1991	2001	1991	2001
1	AhemedNagar	61.03	75.3	2.79	2.76	197	239
2	Akola	65.83	81.42	3.92	4.09	209	300
3	Amravati	70.06	82.54	4.52	2.05	181	213
4	Aurangabad	58.98	72.91	1.52	145	219	289
5	Beed	49.82	67.99	2.21	2.10	170	202
6	Bhandara	64.69	78.47	1.86	1.55	2236	292
7	Buldhana	61.69	75.78	2.44	2.13	195	230
8	Chandrapur	59.41	73.17	1.85	2.93	155	182
9	Dhule	51.22	71.65	2.05	1.98	192	212
10	Gadchiroli	42.89	60.1	0.14	0.75	55	67
11	Gondiya	-	78.52				211
12	Hingoli	-	66.25				218
13	Jalgaon	64.3	75.43	2.21	2.54	271	312
14	Jalna	46.25	64.42	1.68	1.75	177	209
15	Kolhapur	66.94	76.93	2.08	1.84	387	457
16	Latur	55.57	71.54	1.29	1.60	234	290

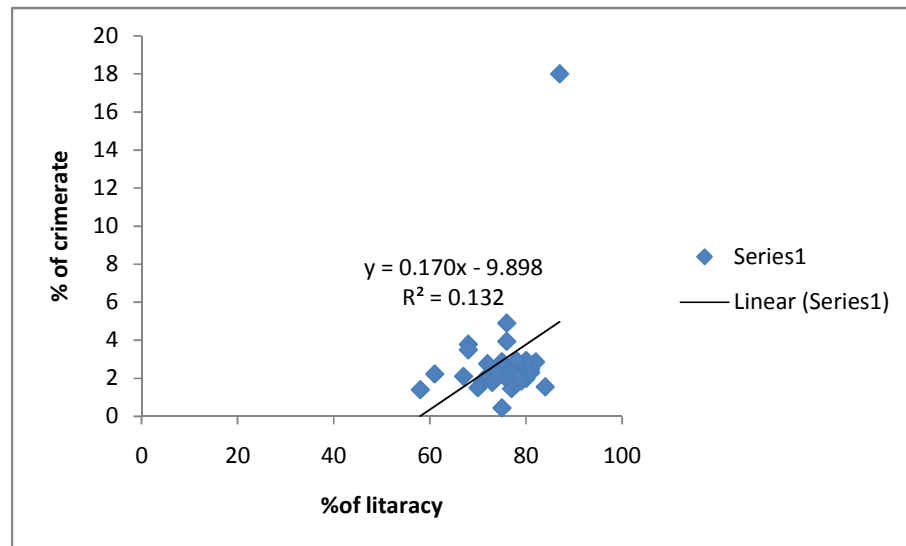


17	Mumbai city	82.5	86.4	22.34	18.41	16432	19254
18	Mumbai suburban	-	86.89			-	-
19	Nagpur	73.64	84.03	2.82	2.94	333	414
20	Nanded	48.17	67.77	2.51	3.49	220	272
21	Nadurbar	-	55.78			-	260
22	Nasik	62.33	74.36	2.59	2.49	247	320
23	Osmanabad	54.27	69.02	1.13	3.39	168	195
24	Parbhani	47.58	66.07	2.15	2.22	191	229
25	Pune	71.05	80.45	1.95	2.87	357	461
26	Raigad	63.95	77.03	2.52	2.40	254	308
27	Ratnagiri	62.7	75.05	0.84	2.44	188	206
28	Sangali	62.61	76.62	1.71	1.80	256	301
29	Satara	66.67	78.22	2.14	1.99	256	267
30	Sindudurgh	75.81	80.3	0.44	0.84	160	165
31	Solapur	56.39	71.25	1.74	3.49	216	259
32	Thane	69.54	80.66	2.52	2.31	557	850
33	Wardha	69.95	80.06	1.65	2.27	169	195
34	Washim	-	73.62				198
35	Yawtmal	57.96	73.62	2.66	2.86	153	181
Maharashtra		64.87	76.62			256	315

Source Census of India 2011.

Literacy is defined as the ability to read and write with understanding if any language as per the senses of India. Literacy is human right a tool of empowerment as well as heart of basic education. Maharashtra State is the highly concentrated urbanized industrilized and high agriculture developed state.

We try to indicate the correlation between literacy and percentage of crimes in Maharshttra. Districtwise data of Literacy and perecentage of crimes the two variables are used to find out coefficient correlation. Pearson's co-rrelation method is used. Value of  $r = 0.48$  shows the significant positive co-relation between these two variables and co-efficient  $r^2 = 0.132$ . It reveals that the positive co-relation between literacy and crime see fig no.4.4



**Figure 4.4 Literacy and crime 2001**

